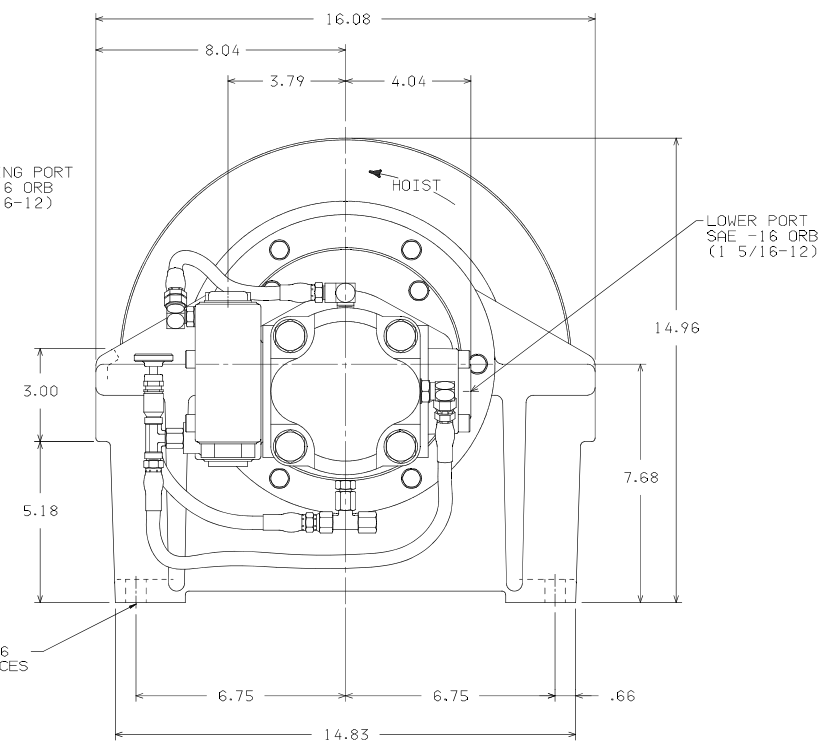
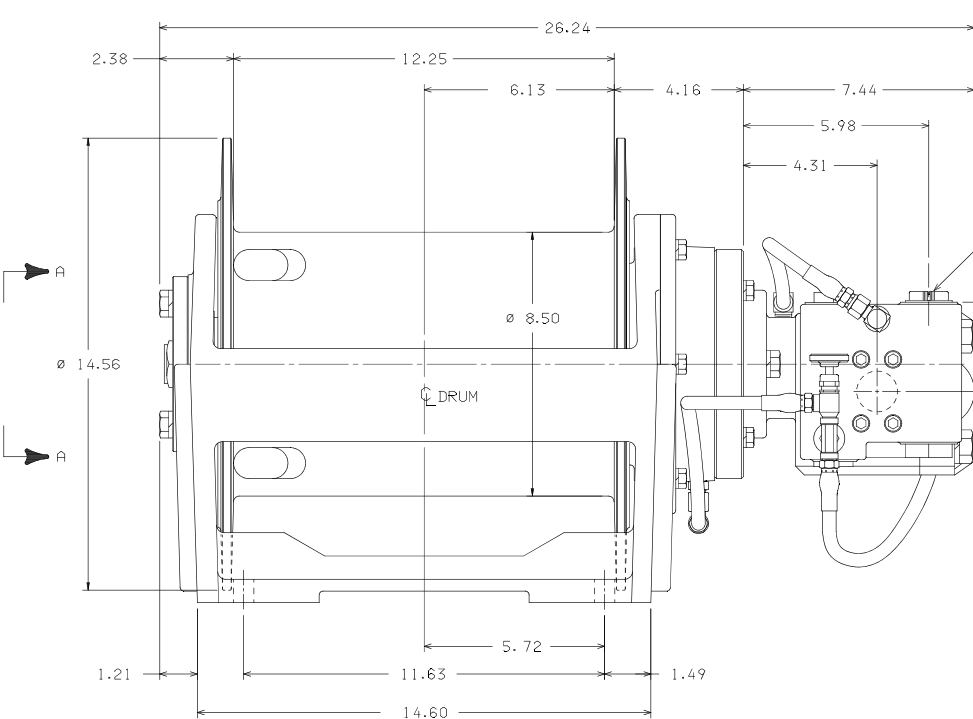


REV	DATE	DESCRIPTION	DATE	DWG NO.	05335	ORIGINATOR	FORMAT
A1	TDR JWM	JWM GJM	REL 03-06-03	030084			
RELEASED							

D  
C  
B  
A

D  
C  
B  
A

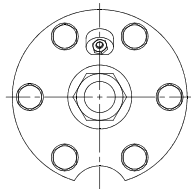


HOISTING PORT  
SAE -16 ORB  
(1 5/16-12)

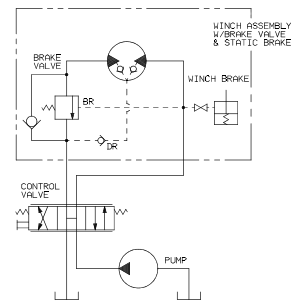
LOWER PORT  
SAE -16 ORB  
(1 5/16-12)

Ø .656  
4 PLACES

LINEPULL (MAX) - - - - 8,000 LBS FIRST LAYER  
 RATIO: - - - - - 34:1  
 PRESSURE - - - - - 2400 PSI  
 FLOW - - - - - 65 GPM  
 LINESPEED - - - - - 241 FT/MIN FIRST LAYER  
 STORAGE - - - - - 439 FT OF 1/2" ROPE  
 OIL CAPACITY - - - - - 4.5 PTS



VIEW A-A



WINCH CONTROL CIRCUIT

BG8B-34039-01-1

1. DIMENSIONS AND TOLERANCING ARE PER ASME Y14.5M-1992 2. REMOVE ALL SHARP EDGES 3. PROPRIETARY THIS DRAWING AND THE INFORMATION CONTAINED HEREIN IS PROPRIETARY TO PACCOR, INC. AND SHALL NOT BE REPRODUCED, COPIED, OR DISCLOSED IN WHOLE OR IN PART, IN ANY FORM OR BY ANY MEANS, WITHOUT THE WRITTEN PERMISSION OF PACCOR, INC. 4. THIS DRAWING USES SYMBOLS TO CLASSIFY CHARACTERISTICS. 5. SYMBOLS ARE DEFINED IN QES02 3.1.2.1.1. CHARACTERISTICS	INIT	INFO	INIT	DATE	T ROBISON	OR	GJM	MATERIAL	WEIGHT (LBS)	300
	THIRD ANGLE PROJECTION		DATE	03-06-03	APPR	M SANDERS	INIT	JWM	TITLE	PACCOR SHARED DATA
	DO NOT SCALE DWG	DIVISIONS OF PACCOR	DATE	03-06-03	SCALE	1:2	INIT	JWM	TITLE	WINCH ASSEMBLY
	PROPRIETARY	DIM'S IN INCHES	REL. NO.	030084	MODEL	BG8B	DWG NO.	05335		
	NON-PROPRIETARY	SECRETARY IN STD LIB	TOLERANCES UNLESS OTHERWISE SPECIFIED	1ST ASSEMBLY						
			250 FINISHES							
			MACHINED SURFACES							
			FINISHES							
			CHAMFER							
			FILLET R							

8 7 6 5 4 3 2 1