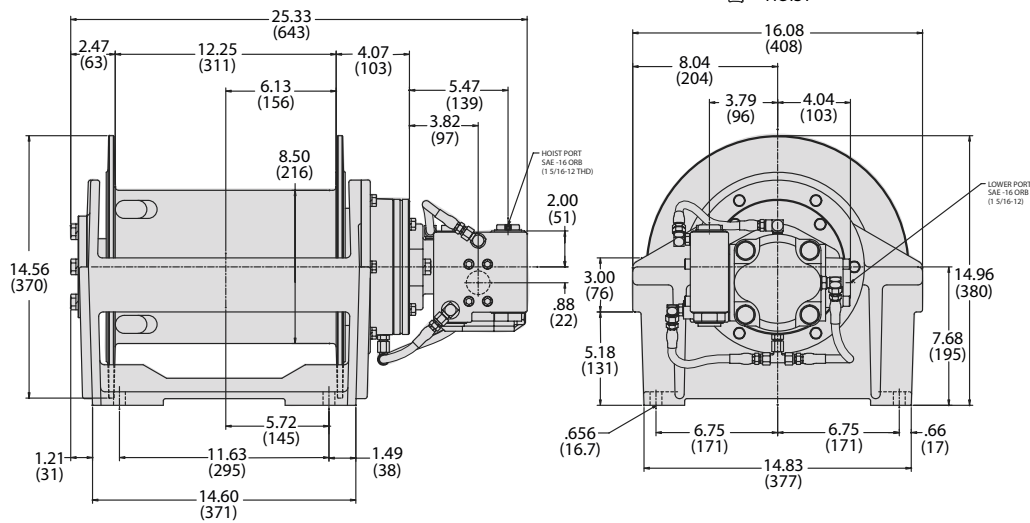


## MODEL BG8B

### Up To 9,000-POUND LINEPULL



- Multi-disc Spring
- Brake Valve /Smooth Performance
- High Efficiency Motor

- 9,000 lbs. First Layer
- Full Load Wire Rope Anchor
- Anti-friction Bearings

#### BG8B-23039-01

3.92 cu in. Motor (64cc)  
3000PSI (206 bar) @ 65 gpm (246 lpm)  
Wire Rope Diameter: 1/2"

	LINE PULL		LINE SPEED		ROPE CAPACITY	
	LB	KG	FPM	MPM	FT	M
1	6,690	3,041	361	110	57	17
2	6,020	2,736	401	122	121	37
3	5,470	2,486	441	134	191	58
4	5,020	2,282	481	147	267	81
5	4,630	2,105	521	159	350	107
6*	4,300	1,955	561	171	439	134

\* Layer does not meet ANSI B30.7

#### BG8B-34039-01

3.92 cu in. Motor (64cc)  
2419PSI (166 bar) @ 65 gpm (246 lpm)  
Wire Rope Diameter: 1/2"

	LINE PULL		LINE SPEED		ROPE CAPACITY	
	LB	KG	FPM	MPM	FT	M
1	8,000	3,636	243	74	57	17
2	7,200	3,273	270	82	121	37
3	6,550	2,977	297	91	191	58
4	6,000	2,727	324	99	267	81
5	5,540	2,518	351	107	350	107
6*	5,140	2,336	378	115	439	134

\* Layer does not meet ANSI B30.7

#### BG8B-34039-01H

3.92 cu in. Motor (64cc)  
2721PSI (187 bar) @ 55 gpm (208 lpm)  
Wire Rope Diameter: 1/2"

	LINE PULL		LINE SPEED		ROPE CAPACITY	
	LB	KG	FPM	MPM	FT	M
1	9,000	4,091	202	62	57	17
2	8,100	3,682	225	69	121	37
3	7,360	3,345	248	76	191	58
4	6,750	3,068	270	82	267	81
5	6,230	2,832	293	89	350	107
6*	5,790	2,632	315	96	439	134

\* Layer does not meet ANSI B30.7

#### BG8B-59020-01

1.96 cu in. Motor (32cc)  
2918PSI (201 bar) @ 35 gpm (132 lpm)  
Wire Rope Diameter: 1/2"

	LINE PULL		LINE SPEED		ROPE CAPACITY	
	LB	KG	FPM	MPM	FT	M
1	8,000	3,636	145	44	57	17
2	7,200	3,273	161	49	121	37
3	6,540	2,973	178	54	191	58
4	6,000	2,727	194	59	267	81
5	5,540	2,518	210	64	350	107
6*	5,140	2,336	226	69	439	134

\* Layer does not meet ANSI B30.7

LIT2309 R2 9-2009