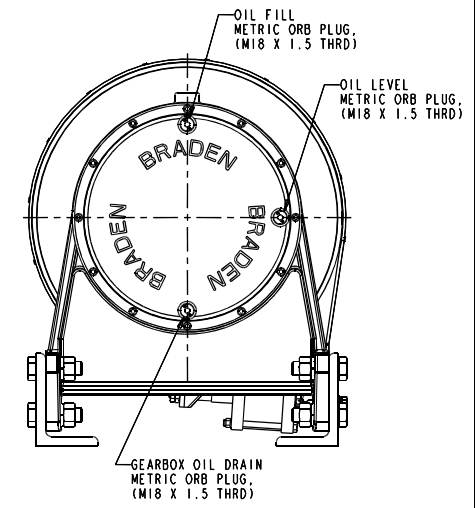
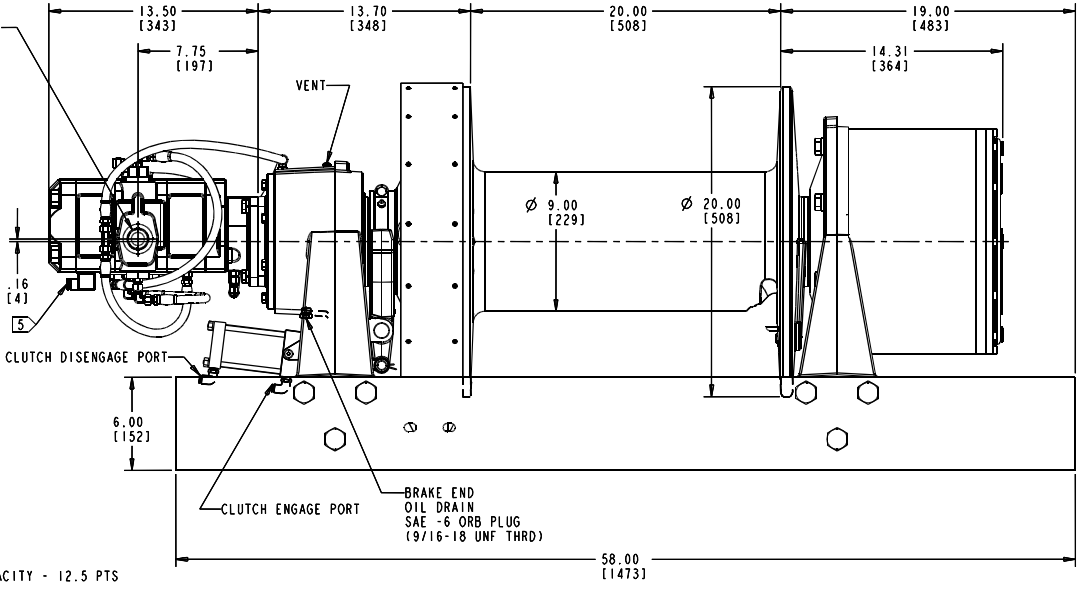
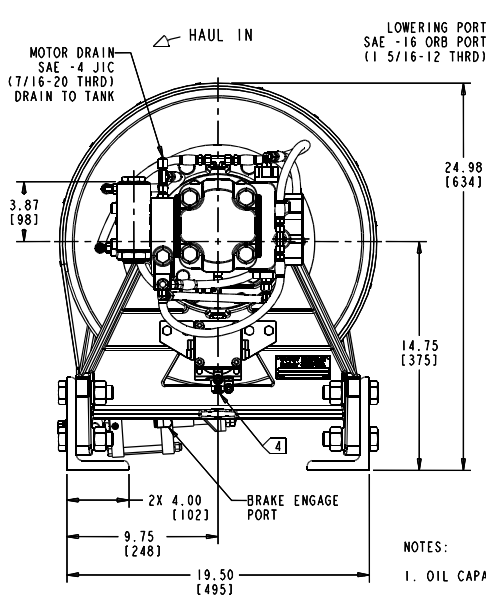
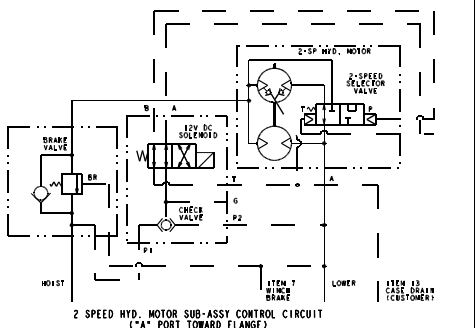
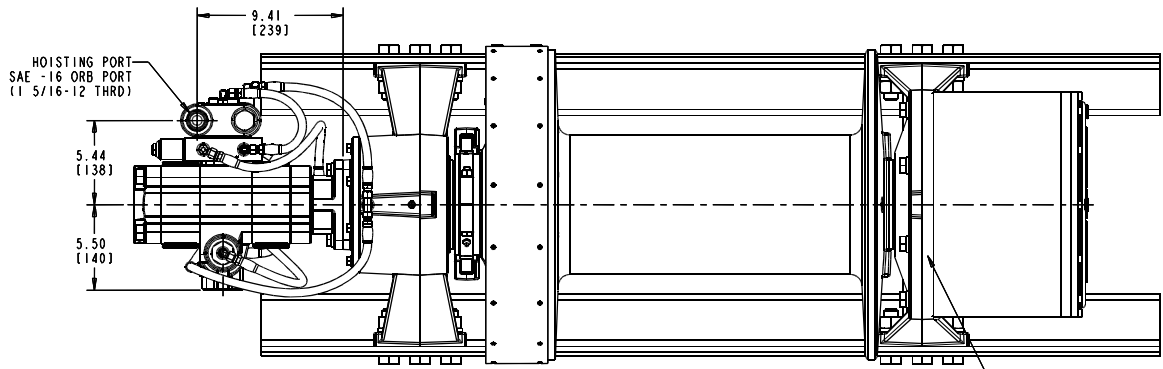


8 7 6 5 4 3 2 1

REV	APPD	DATE	DESCRIPTION	REV	APPD	DATE	DESCRIPTION
C2	DDA	04-12-12	UPDATED TO ADD ELECTRONIC SHIFT	A1	DDA	04-12-12	
	REG	JP		B1	DDA	03-01-12	
					REG	JP	

REV. NO.	06510	PROJ. #	
REV.	DDA	REG	JP
REV.	DDA	REG	JP
REV.	DDA	REG	JP

DATE	11-18-11
DATE	110437
DATE	03-01-12
DATE	120103



- NOTES:
- OIL CAPACITY - 12.5 PTS
 - Ø 1.00 CABLE FERRULE SUPPLIED W/ WINCH
 - 130 PSI (MAX) AIR PRESSURE FOR CLUTCH AND BRAKE CYLINDERS
 - AIR CLUTCH EQUIPPED W/ 12V INDICATOR SWITCH ACTIVATED WHEN CLUTCH IS ENGAGED
 - 12V DC SOLENOID SHIFT FOR 2 SPEED OPERATION

PERFORMANCE DATA:

RATIO - 123.38:1
 LINE PULL (MAX) - 80,000 / 38,260 LBS @ 2670 PSI
 CABLE STORAGE - 327 FT - Ø 1.00 CABLE
 INPUT RPM (MAX) @ MAXIMUM LINE PULL - 1293 RPM
 LINE SPEED - 27760 FPM @ 60 GPM
 Ø 1.00 CABLE FERRULE SUPPLIED WITH WINCH

HP80A-123089/045-01

1. DIMENSIONS AND TOLERANCES ARE PER ASME Y14.5M-1994	2. REMOVE ALL SHARP EDGES AND CHAMFER	3. FINISH ALL SURFACES	4. THIS DRAWING USES SYMBOLS TO CLARIFY CHARACTERISTICS. SYMBOLS ARE DEFINED IN QMG002 CLASS. OF CHARACTERISTICS.	5. UNLESS OTHERWISE SPECIFIED, DIMENSIONS ARE IN INCHES AND DECIMALS THEREOF.	6. UNLESS OTHERWISE SPECIFIED, TOLERANCES ARE AS FOLLOWS: FRACTIONS: ±.0005 (16 DECIMALS) DECIMALS: ±.0005 (4 DECIMALS) ANGLES: ±.005 (3 DECIMALS) HOLE POSITION: ±.005 (3 DECIMALS) HOLE DIAMETER: ±.0005 (4 DECIMALS) HOLE DEPTH: ±.0005 (4 DECIMALS) HOLE TAPER: ±.0005 (4 DECIMALS) HOLE CHAMFER: ±.0005 (4 DECIMALS) HOLE DRILLING: ±.0005 (4 DECIMALS) HOLE REAMING: ±.0005 (4 DECIMALS) HOLE BORE: ±.0005 (4 DECIMALS) HOLE TAPER: ±.0005 (4 DECIMALS) HOLE CHAMFER: ±.0005 (4 DECIMALS) HOLE DRILLING: ±.0005 (4 DECIMALS) HOLE REAMING: ±.0005 (4 DECIMALS) HOLE BORE: ±.0005 (4 DECIMALS)				
DATE	11-08-11	SCALE	0.250	REV. NO.	110437	MODEL	HP80A	REV. NO.	06510
DESIGNER	D. ARNOLD	APPD	R. GASS	DATE	11-08-11	SCALE	0.250	REV. NO.	110437
DATE	11-08-11	SCALE	0.250	REV. NO.	110437	MODEL	HP80A	REV. NO.	06510
DATE	11-08-11	SCALE	0.250	REV. NO.	110437	MODEL	HP80A	REV. NO.	06510

8 7 6 5 4 3 2 1