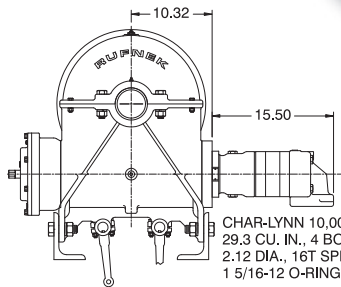
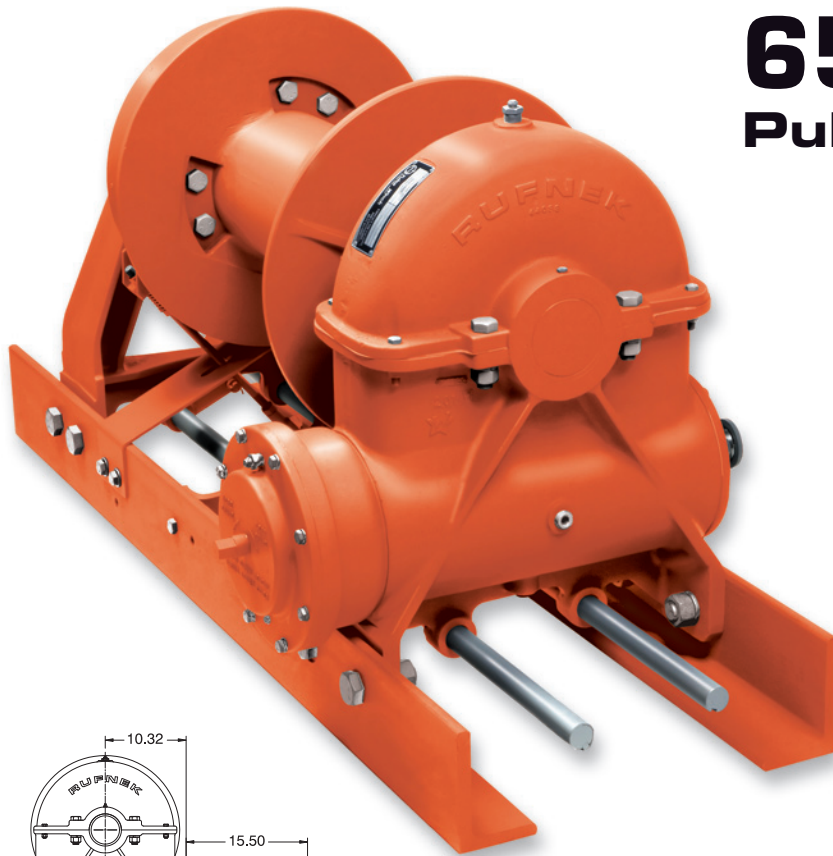
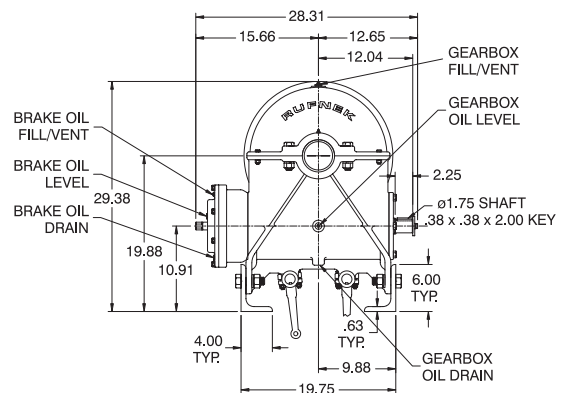
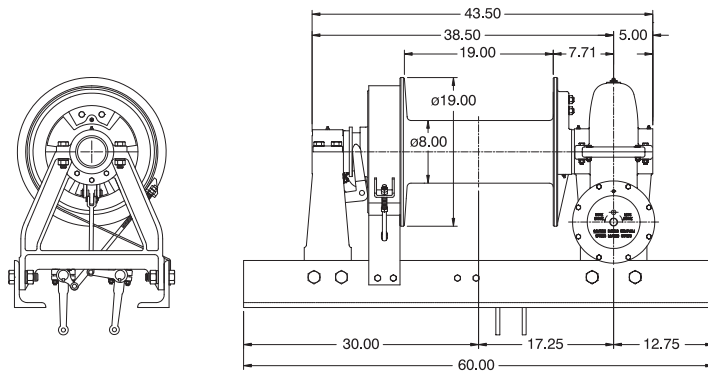


65,000 lb. Pulling Capacity



CHAR-LYNN 10,000 SERIES MOTOR,
29.3 CU. IN., 4 BOLT "C" MOUNT
2.12 DIA., 16T SPLINED SHAFT
1 5/16-12 O-RING PORTS



Approximate weight: 1,346 lb Mechanical / 1,441 lb Hydraulic

HYDRAULIC PERFORMANCE DATA						MECHANICAL DRIVE					
Layer	Linepull (lb)	Linepull (kg)	Linespeed (fpm)	Linespeed (mpm)	Cable Cap. - 1.0" Ø (ft)	Cable Cap. - 1.0" Ø (m)	Input Torque-Static (lb-in)	Input Torque-Static (Nm)	Input Torque-Dynamic (lb-in)	Input Torque-Dynamic (Nm)	Input Speed (rpm)
1	65,000	29,484	22	7	40	12	15,159	1,713	10,954	1,238	max. 400
2	53,194	24,129	27	8	90	27	HYDRAULIC DRIVE (29.3 CID Motor)				
3	45,010	20,417	32	10	148	45	Pressure		Flow		
4	39,008	17,694	37	11	215	66	(Δ psi)	(Δ bar)	(gpm)	(lpm)	
5*	34,491	15,612	42	13	291	89	2,700	186	55	208	
8.00 BBI x 19.00 FL x 19.00 W							Cable Size (in)	Capacity (ft)	Capacity (m)		
CAUTION:							0.875	306	93		
The last 5 wraps of cable must be left on the drum to assist the cable clamp in holding the load.							1.125	188	57		
WARNING:							Winches and capstans are not intended to be used for lifting or moving of persons.				

*Layer does not meet SAE J706 Requirement

RUFNEK® Worm Gear Winches **RN65W**